

Proposal to Berkey Congregation - May, 2021

Berkey Memorial-Meditation Garden and Outdoor Worship Space

Groups involved thus far in this proposal:

- Creation Care Committee - Jennifer Schrock (member until Feb., 2021), Lydia Martin, James Yoder (chair)
- Eco-Friendly Property Development Committee - James Yoder (chair), Lowell Nafziger, Ruth Miller Roth, Jennifer Schrock (until Feb, 2021) Greg Smucker, Curt Wenger, Brandon Yoder, Mark Yoder
- Memorial/Meditation Garden Committee - Ruth Miller Roth (chair), Lindsay Diener-Locke, Roxanna Sommers, Mark Yoder, and Peter Shetler (trustee, began Jan., 2021)
- Stewardship and Finance Commission - Dale Snyder (chair), Dave Birky, Missy Schrock, Aaron Weiand, Richard Kauffman
- Spiritual Leadership Team - Joe Leichty (chair), Shirley Dick, Lisa Heinz, Lois Mast, Ruth Miller Roth, Mark Schloneger, Joanne Gallardo, Richard Kauffman



Based on a congregational survey, the Eco-Friendly Property Development Committee identified the following priorities for the next 3-5 years:

- Continue to use our space for community gardens
- Continue to provide space for children to play and space for intergenerational activities
- Install additional solar panels
- Create outdoor spaces for meditation and worship
- Create walking paths and trails
- Plant additional trees that would eventually become a wooded area
- Create a memorial garden



Three Phases:

Phase #1

- *Foundation/needed infrastructure to build on
- *Largely work we will need to hire out
- *Stone Ridge Landscaping has provided dollar amounts if we choose to use them

Phases #2 and #3

- *Include some jobs that could be carried out by the congregation
- *Plantings, pergola entrance, benches, etc.
- *We decide how much we want to do ourselves or have done for us

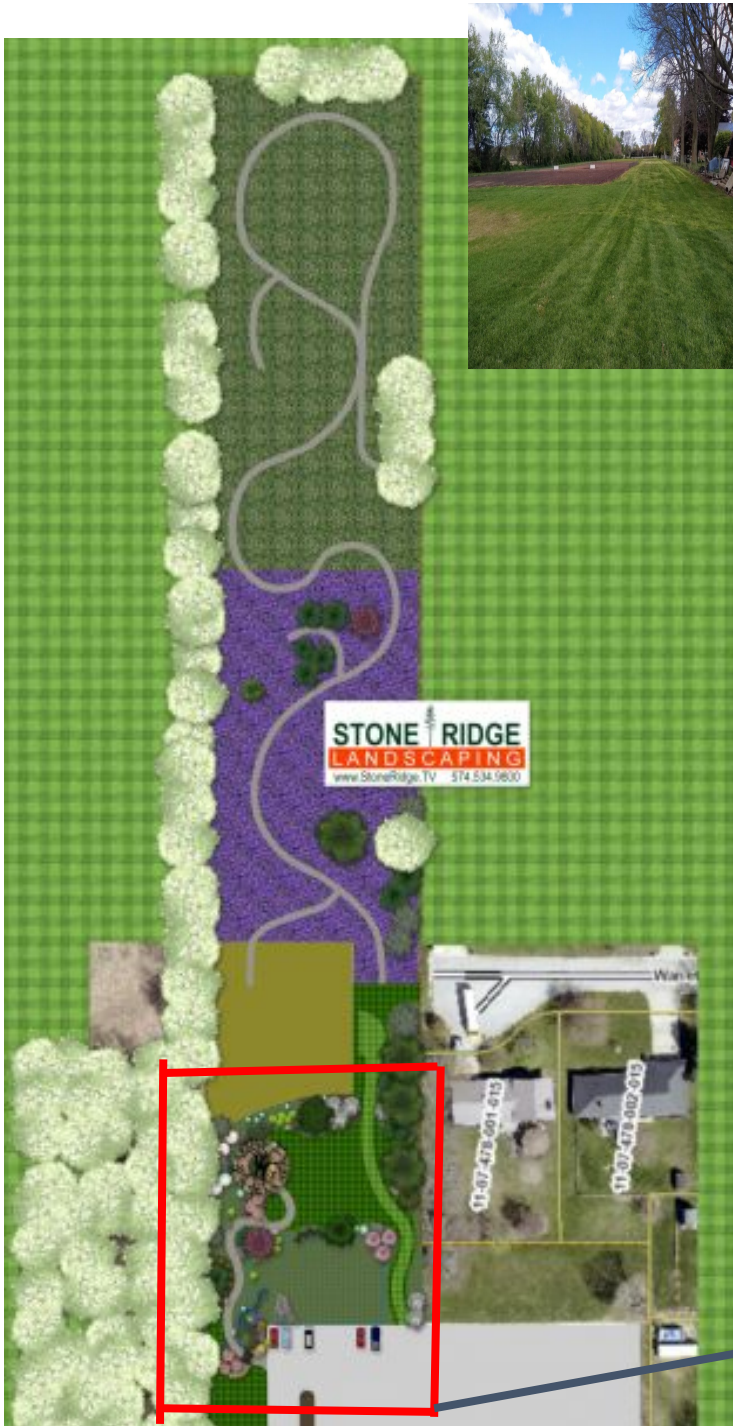
Why a Memorial Garden?

- Growing awareness that Berkey doesn't have our own space to honor and remember people in our congregation who have passed away.
- A Memorial Garden can be a wonderful gateway into the back part of our land, connecting an outdoor worship space, community gardens, meadows, trails, and woods.
- A Memorial Garden can be an important part of our larger vision in being an inviting, welcoming, hospitable congregation to our neighbors and for our congregation.
- We have ample land to create a Memorial Garden



Priorities in thinking about a Memorial Garden --

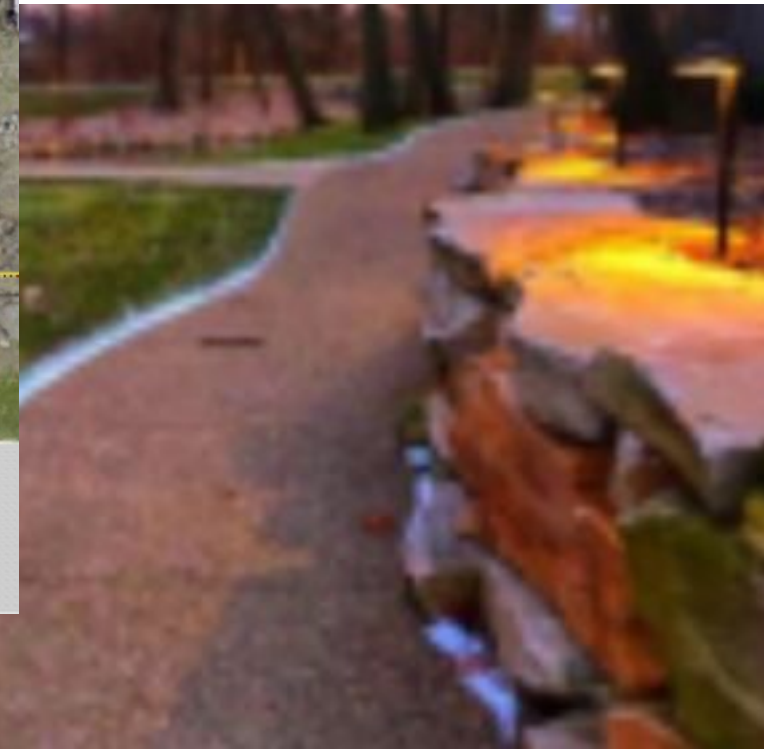
- *A long-term memorial garden that is welcoming to all ages
- *A space that can also be used for nature walks, meditation and solitude with benches along the paths.
- *A welcoming, defined entrance with close access to parking
- *An open space that can be used for large gatherings of outdoor worship services, weddings, baptisms, and other special events
- *A utility road that enters from the parking lot along the east side of the property space and goes to the community garden with 3 to 6 parking spaces and a turn around spot.



Memorial/Meditation Garden Phase 1

1. Sidewalk

- *Winding path leading from entrance on NW corner of parking lot to the Memorial Garden circle
- *Handicap accessible that is easy for strollers, wheelchairs, older folks with canes, etc.
- *Exposed aggregate (pea stone) surface
- *Easy long-term maintenance
- *Blends in more naturally with nature



2. Dry Creek Bed and Retention Pond Plantings

- *Designed to maintain surface runoff into the existing retention pond
- *Create a year-long natural creek appearance
- *Prairie grasses and other native plantings added to retention pond.



3. Memorial Wall

- *Memorial space is a circular design
- *Half circle on the west side of the space
- *Low wall for friendly, welcoming feel, available to sit on or for children to be on
- *Blends in more naturally with nature
- *Plantings around the wall on south, west, and north side
- *East side of circle open, facing outdoor worship space
- *Memorial plaques integrated on the walls
- *Plaques could be for any deceased person connected with Berkey (past and future)
- *Ample space along path for additional walls, when needed



4. Memorial Tree

- *Center of the Memorial Garden circle
- *Acts as a focal point
- *Many churches internationally began under a tree
- *Trees represent looking to the future for generations to come



5. Memorial Tree Planting Bed

- * Selected with care and will be native to this area

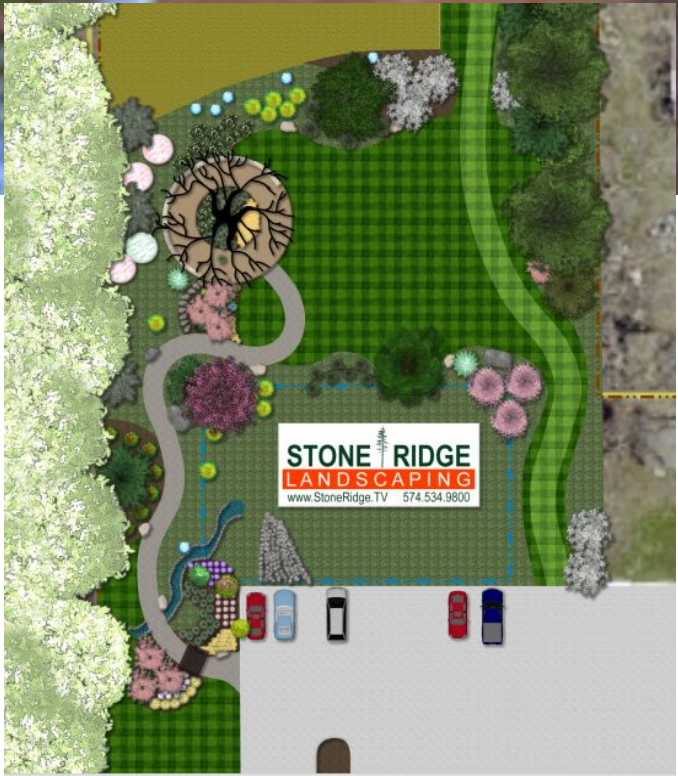
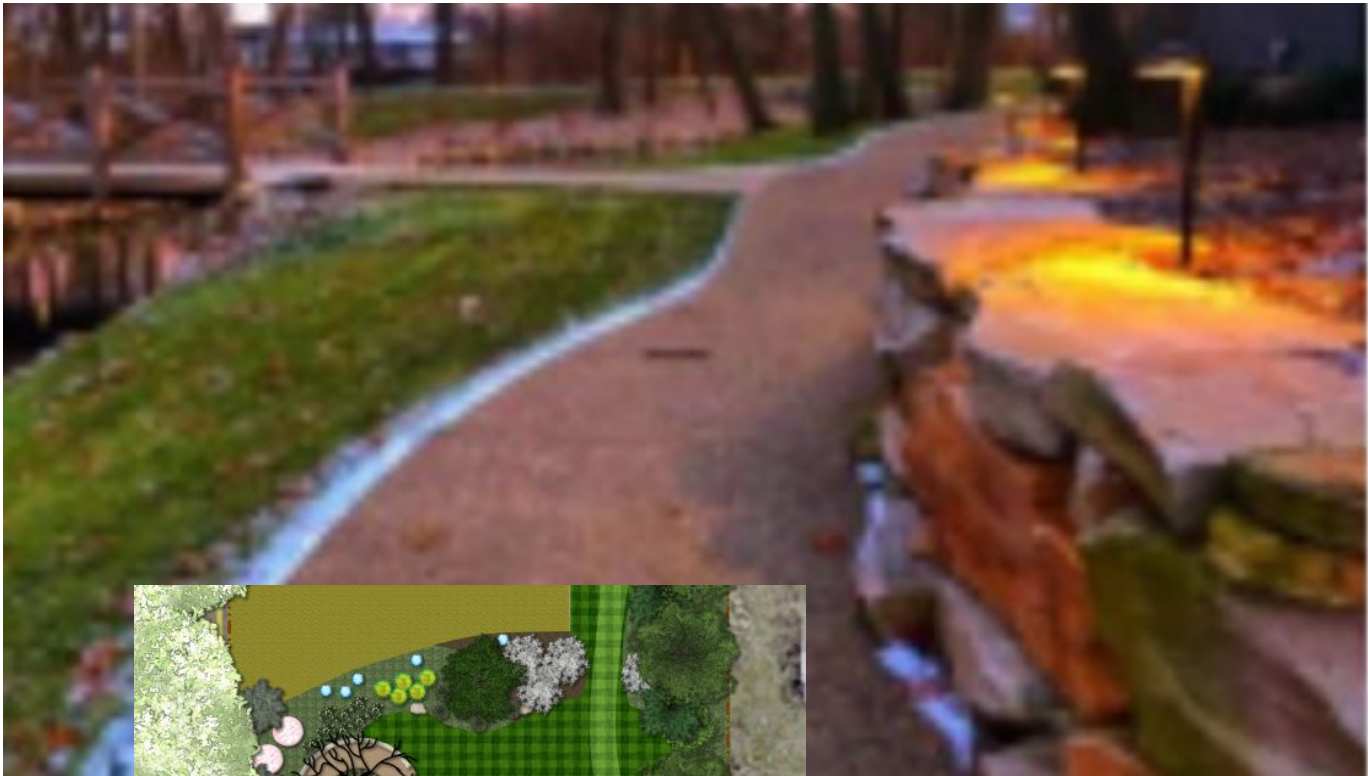


6. Electric Service

- *Four electric outlets provided at the Memorial Circle for worship services
- *Electric box already installed in utility barn

7. Lighting

- *Provides aesthetic beauty and security for guests navigating the landscape and paths



8. Maintenance

- *May - October
- *Could hire outside our congregation or pay someone from our congregation

9. Irrigation Sprinklers

- *Provides moisture to the new plantings
- *Already water access from community garden

10. Site Restoration

- *Restore lawn area for worship space.
 - Grass seed
 - Prairie Seed
 - Straw application over bare soil



Memorial/Meditation Garden

Phase 2

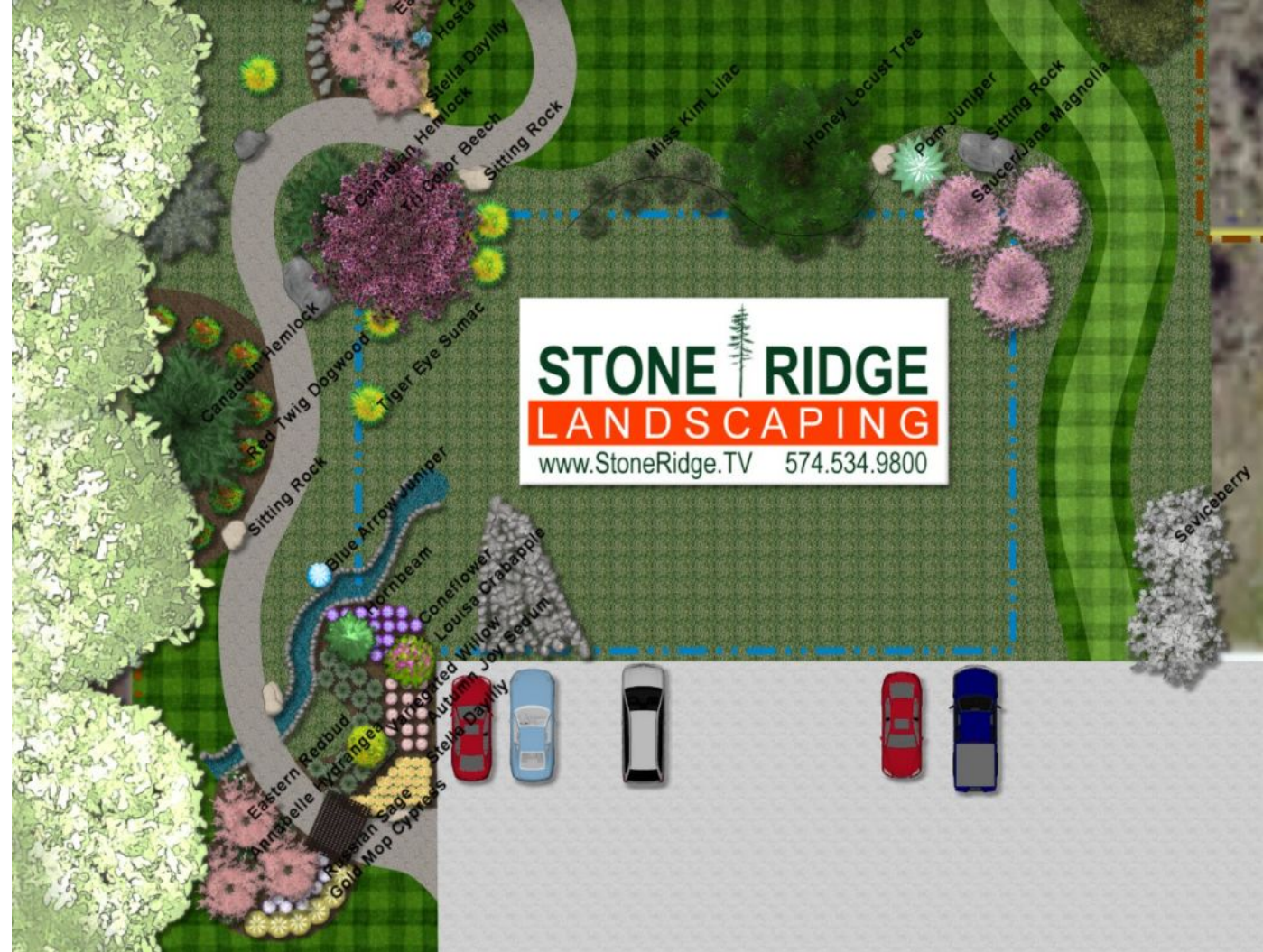
1. Cedar Pergola at the Entrance

- *Provides an important visual entrance into the property space
- *Design provides shade and a sense of welcoming enclosure at entrance



2. Entry Planting Beds

- * Located around the entrance
- * Selected for changing colors and interest throughout the year.
- * Native plants to our area
- * Selected for visual size increase to be easily seen and enjoyed throughout the year



3. Additional Planting Beds

*Additional planting bed areas around the retention pond, the worship space and along the walking path



Memorial/Meditation Garden

(moving outside of Memorial Garden and into back property)

Phase 3

1. Extended Paths

- *Simple grass paths that leave the circle memorial space on the north side

- *Paths connect Memorial/Meditation Garden with the community garden, meadow, prayer labyrinth, and woods in the back part of the property.

- *Welcoming space for Berkey neighbors, schools, community

2. Plantings along the paths in back part of the property

3. Benches

- possibly made by JYF, MYF volunteers
- possibly memorial donations

4. Prayer Labyrinth

Phase 1	\$66,519
Phase 2	\$41,540
Phase 3	\$16,941

Total Cost for Entire Project \$125,000

